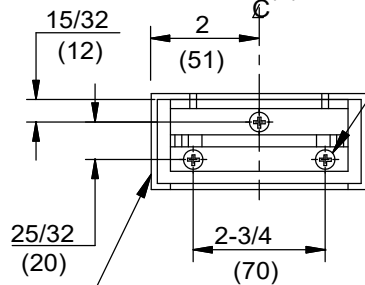


NOTE:

1. DO NOT SCALE DRAWING.
2. DIMENSIONS ARE IN INCHES\ (MM).
3. MIN. HEADER SIZE 1-3/4" X 4"
4. CUT OUT FOR COVER PLATE
3-3/4" X 15-3/4"
5. CLEARANCE BETWEEN HEADER AND DOOR 1/8".
6. 90° HO MODELS NOMINAL HOLD OPEN AT 88°
105° HO MODELS NOMINAL HOLD OPEN AT 103°
7. AUXILIARY STOP REQUIRED COINCIDING WITH DEADSTOP ON RTS CLOSER.

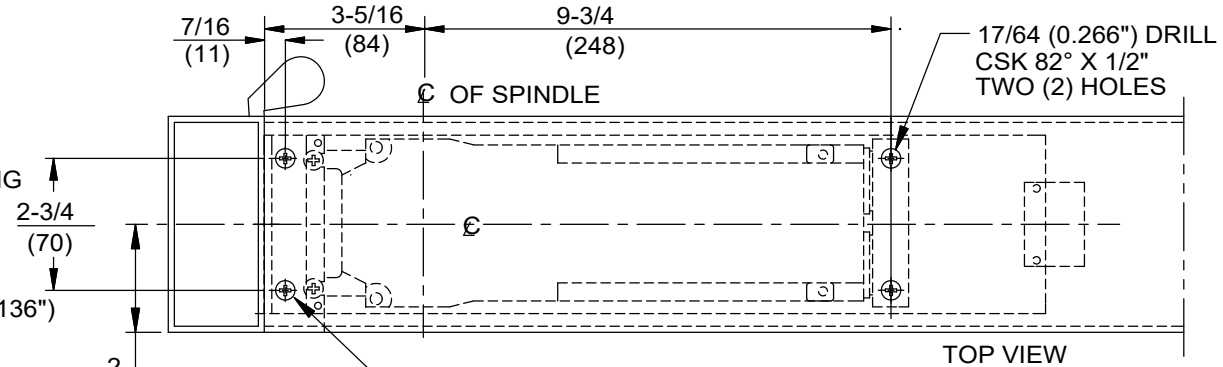
FOR 8-32 MACHINE SCREWS USE No.29 (0.136")
DRILL AND TAP THREE (3) HOLES



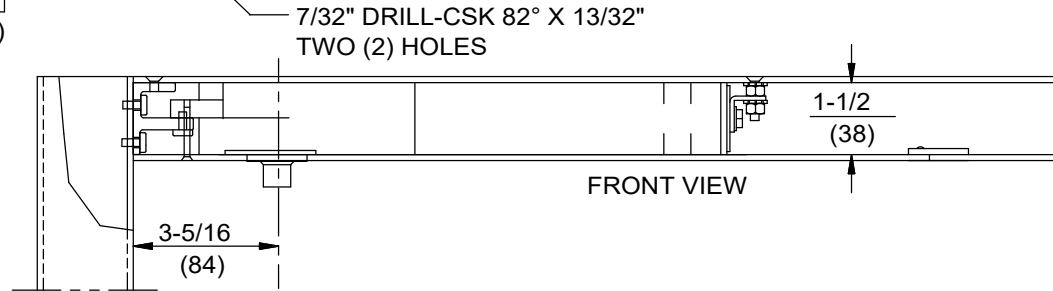
PIVOT SIDE

SIDE VIEW
(CLOSER BODY REMOVED)

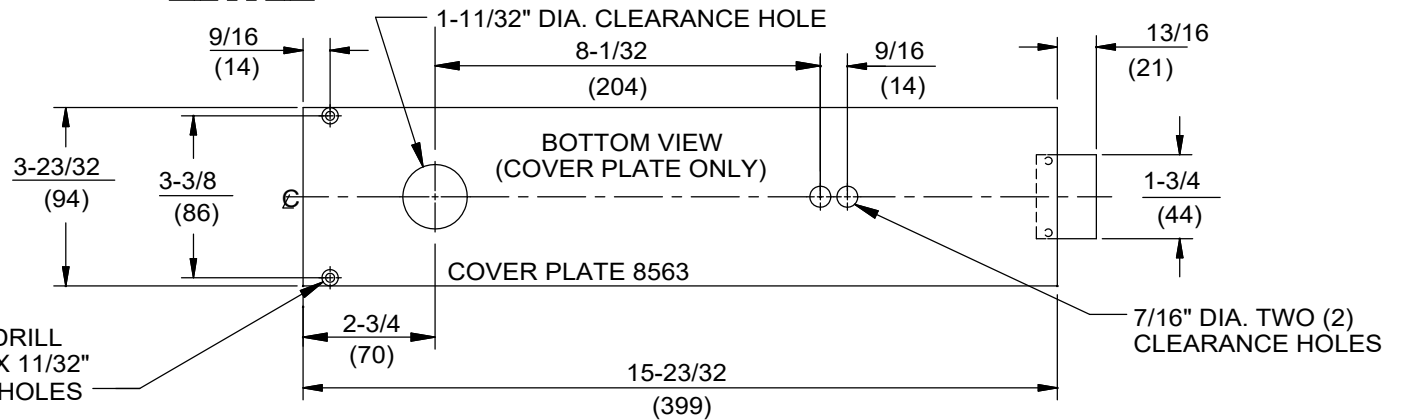
3/16" DRILL
CSK 82° X 11/32"
TWO (2) HOLES



TOP VIEW



FRONT VIEW



BOTTOM VIEW
(COVER PLATE ONLY)

COVER PLATE 8563

DOOR CLOSER MODEL: RTS SERIES PACKAGE 26, ALUMINUM DOOR
AND FRAME PREPARATION, No. 8812 TRACK ARM,
No. 8563 COVER PLATE, DOOR HUNG ON 3/4" OFFSET PIVOTS

